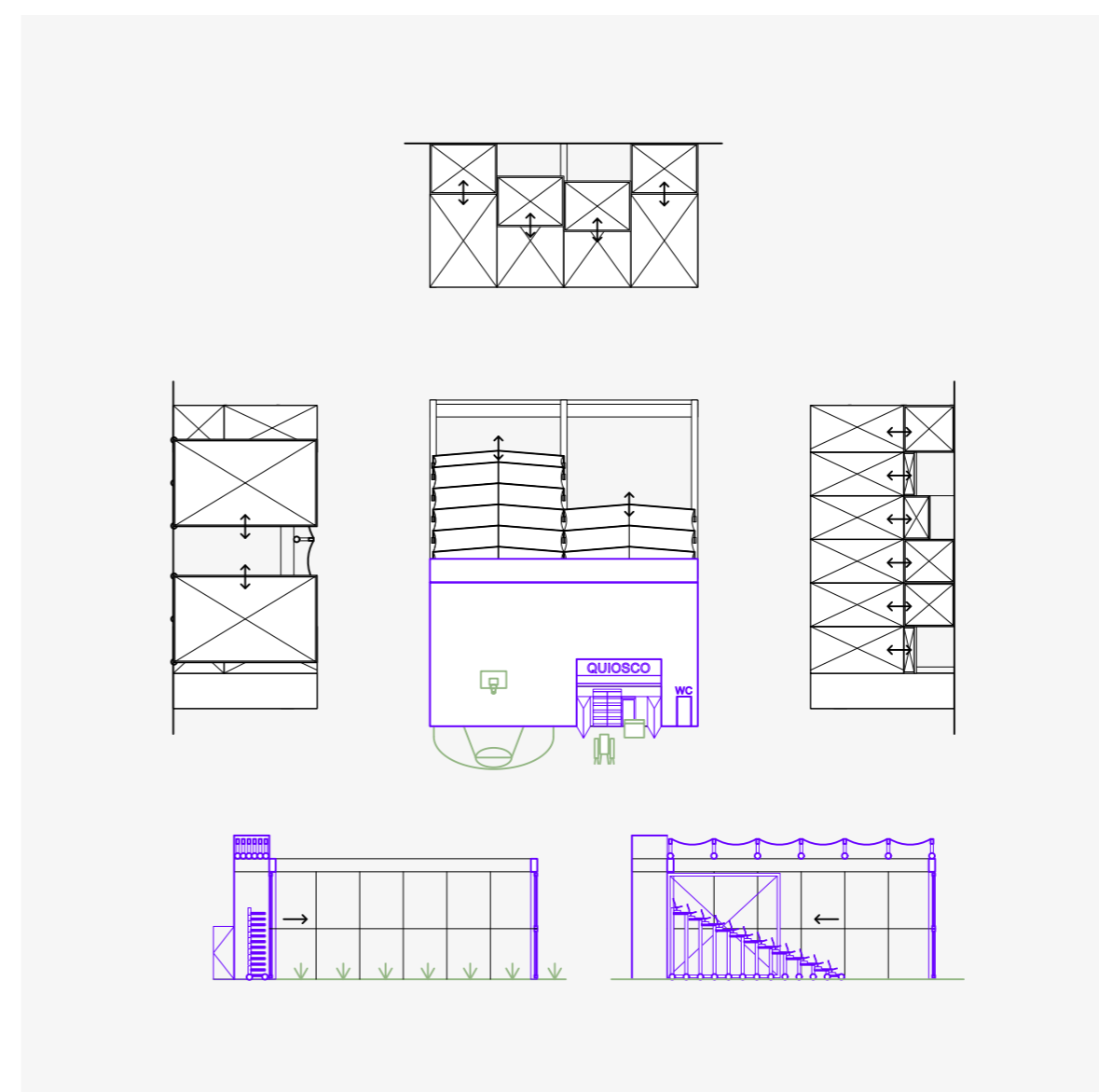
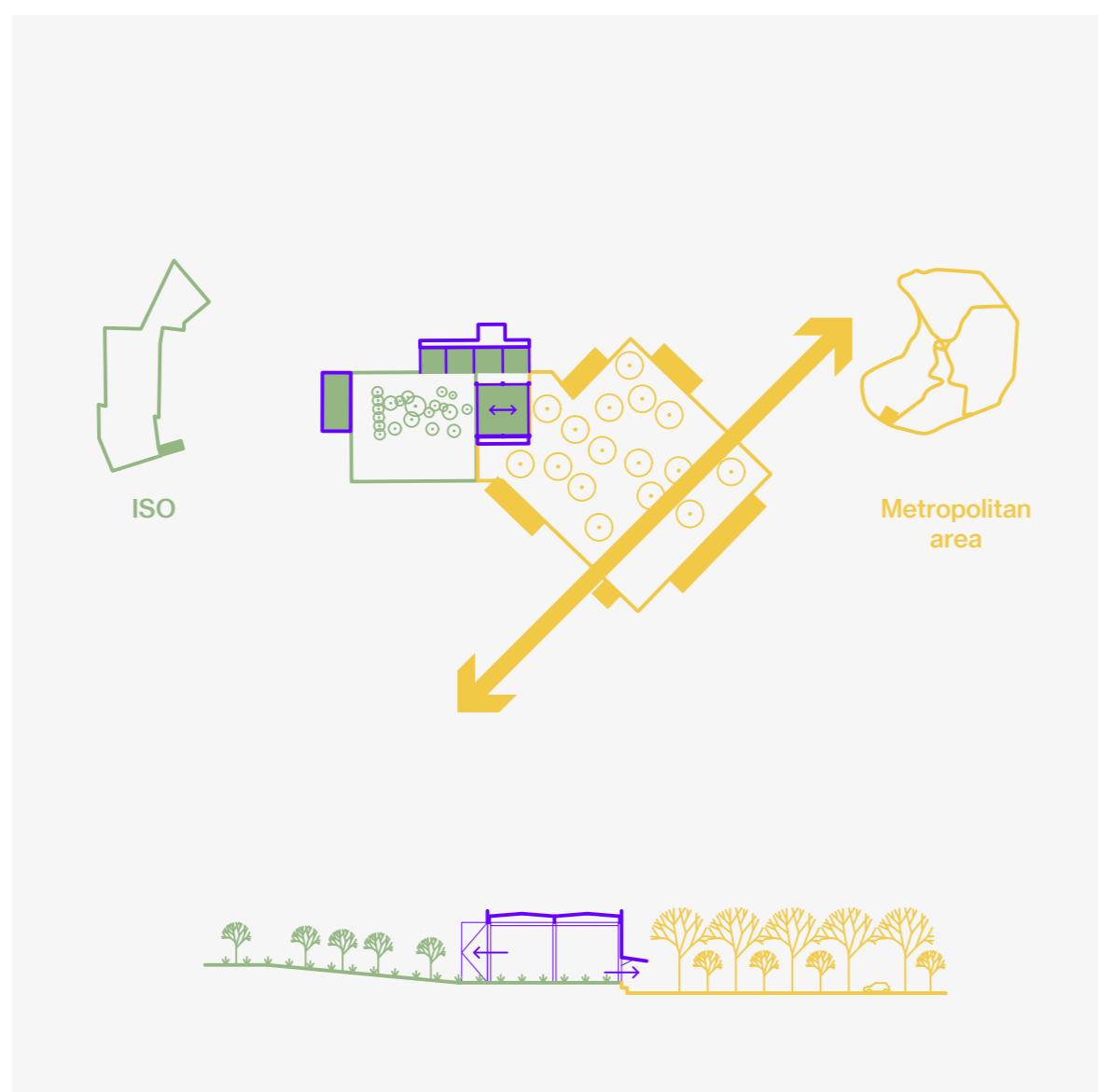


One building and two public square instead

Highlighting the importance of enabling public void we intend to invert the approach suggested by the brief; instead of 2 buildings and 1 public square, we propose one building and two public squares. Located at the interface between the metropolitan axis of Av. de Ntra. Sra. de Valvanera and the residential fabric of carabanchel, the new building offer the piazza Almodovar its missing facade and on the north side, give to the ISO town's entrance a new « parvis ».

A landscape strategy is implemented at the scale of the reflection perimeter to precisely define each of the two created void. The plaza de Almodovar further supported in its existing perimeter is unified by a dense plantation of pin trees, which high reach allows a free circulation on ground level. Thereby absorbing its vis-avis on the other side of the Avenue, the plaza Almodovar declare its metropolitan figure. The second void generated on the northern part belongs to an already existing constellation of «pocket park». Away from the turmoil of the metropolis and managed by ISO's association this space allows gardening. Its surface kept unsealed is densely populated by trees of lower amplitude giving the park a more intimate environment.



Silent cultural machine

In addition to the created void, a small cultural condenser is implanted so has to activate the surrounding public space in different manners. The condenser is made of three basic elements: a shelf, a flat programmable surface and an adaptable facade. The shelf are used to accommodate kitchen, basic sanitary facilities or a stage for 300 people. Always adjoining a shelf the free programmable surfaces varies their degree of accessibility to the public thanks to easily operable facade and roof shade.

Facades provide a visual framework for public open space. Operable and performative, they engage in diverse dialogues with the public space they frame. The new facades materialize latent urban fronts: on one side, the kiosk provides the last facade for the almodovar square, while on the other, it creates a forecourt for the ISO zone. The enfilade space closes the hollow tooth.