

MADRID



A CENTRE FOR THE NEW CULTURAL DISTRICT OF CARABANCHEL

Carabanchel, a place where cultures flow, we step back and analyze it from a wider scale. We look at Carabanchel from afar and up close, we revitalize, repair and take care of it. Any outlined defect we want to turn into a potential. We examine its structure, its typologies, its characteristics, in order to propose three different strategies for the greater area surrounding that of Plaza de Almodovar: conquer the vacant sites, create an environmental network between Plaza de Almodovar and its nearby structures of greenery, and finally unsealing the typical backyards and patios of Carabanchel by creating pocket gardens along the main axes.

We can not neglect the qualities which Plaza de Almodovar offers today. Trees of different species, seating and planting elements, spaces for social interaction, no matter run down they might be. Its size however too small compared to the traffic surrounding it. By minimizing the passing traffic on site we take care of the predominance of artificial surfaces, reducing the

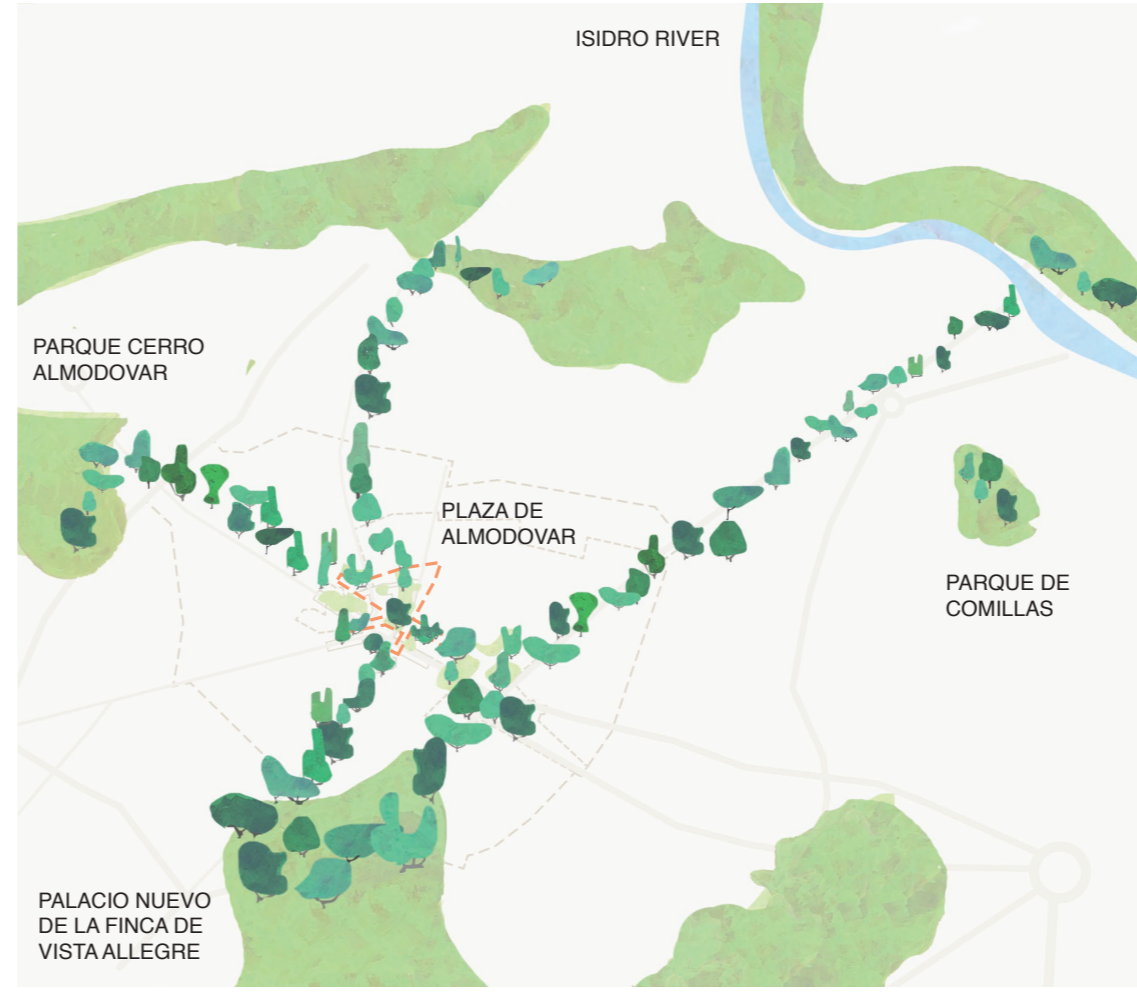
effects of the "heat island" and extending Plaza de Almodovar in the north to cover the former Calle de la Zaida. We strengthen its diverse vegetation component, its environmental quality and its urban landscape. Meadows, gardens, and grasslands, accumulating within the dense urban fabric bring an unexpected new element to Carabanchel.

We imagine the cultural Institute of Carabanchel as a continuation of Plaza de Almodovar, a public space happening on a stack of large open balconies, interconnected by a variety of staircases, elevators and galleries. They are the home to the functions of the Institute related to culture and art, as well as to public services, sports facilities, and educational spaces.

We recover a public space that inherits nature, society, mobility, and culture, acting as a new node and as catalyst for future adjustments to the urban structure in the wider area of Carabanchel.

1&2 VOIDS AND GREEN BOULEVARDS

Unused, neglected, avoided, we propose to conquer those vacant lots and temporarily turn them into planted environments for the time being. Enhancing the pedestrian connection between Plaza de Almodovar and its more popular neighbors is a first step in fostering a new mobility in Madrid, turning away from the car towards more modern urban transport and movement.



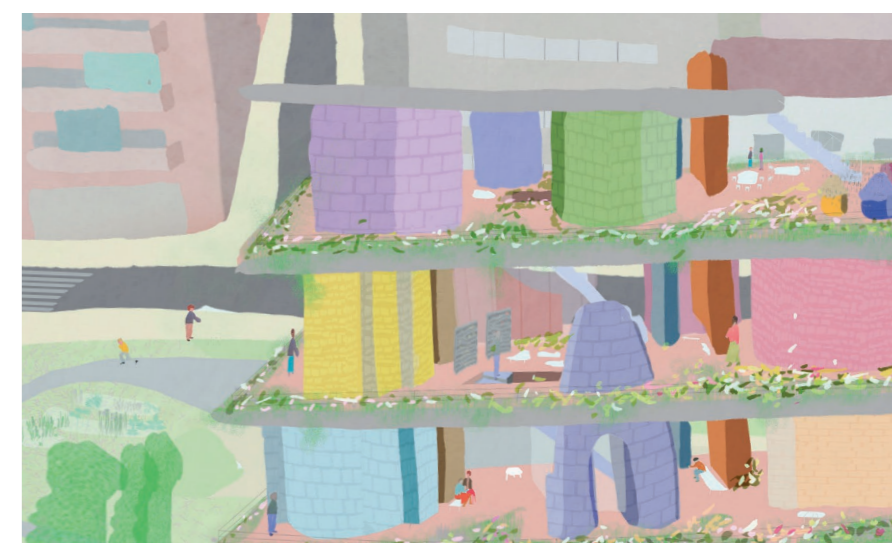
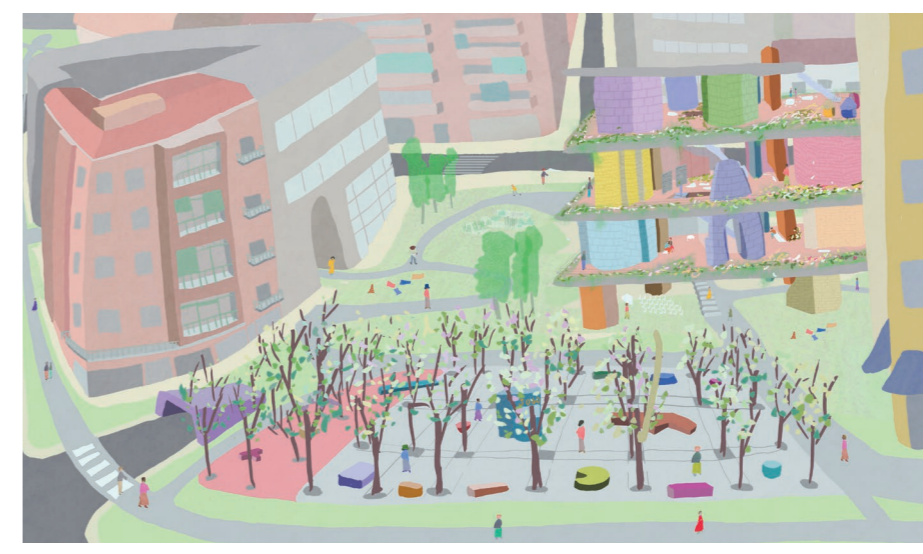
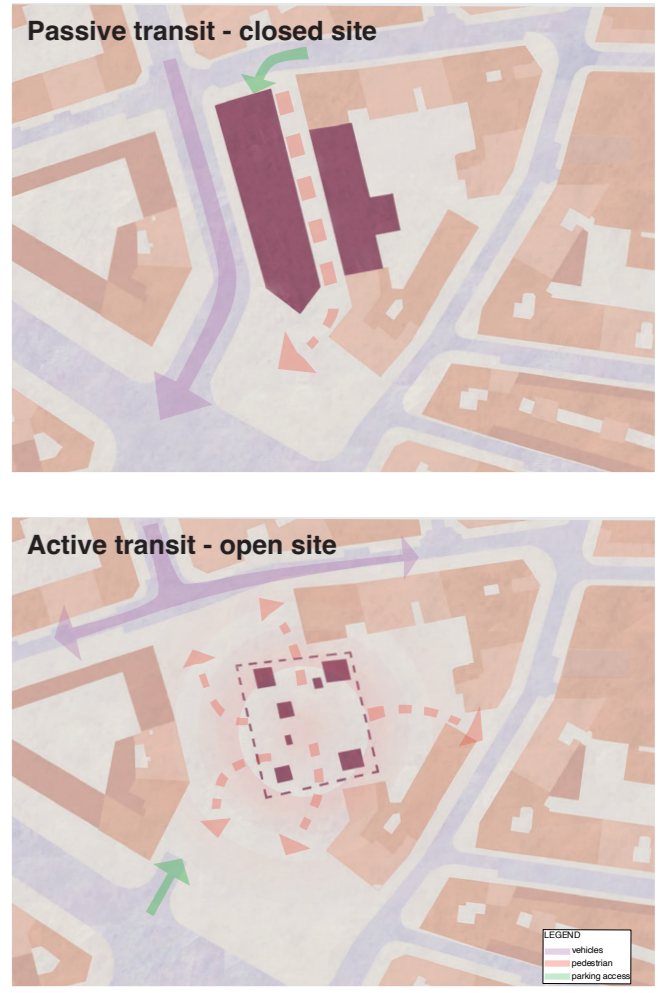
3 OPENING THE COURTYARDS

Formerly hidden and neglected, paved and sealed, places of circulation and facilities, yet shadowed and quiet, planted courtyards will become important stepping stones in the network of Carabanchel.



LINKING TWO SITES

We clarify the diffuse urban situation of two separated buildings and reduce the proposed amount of building volumes to a single one by drawing up a Plan de agrupación de parcelas by connecting the floors.



ALMODOVAR AUDITORIUM

1. GARDENING

Neighbours are welcome to participate in gardening courses, or to get involved in the maintenance of the garden, experiencing the different seasons of the year, and using the space to meditate and disconnect from the city.

2. CLASSROOM

a flexible space aimed open to host multiple classes. open in its design to accommodate new ways of learning with direct and intimate lectures.

3. DANCING

a space of discovery of body and space. the workshop although contained in size will see a seasonal use aimed to be integrated with the open square and be used in conjunction with the spaces provided on its same floor.

4. PHOTOGRAPHY ROOM STUDIOS

a space for the community to connect and rediscover the importance of physical medium such as film photography, for commissioning work but also develop oneself projects.

5. COOKING AND EXPERIMENTAL DINING

a space for learning and leisure. Cooking workshops will take place as well as organized events. The intention will be to introduce new ways of experience local cuisine.

6. REHEARSAL / YOGA STUDIOS

a space for meditation, to rediscover the inner links between body and wellness. winter classes will be held in the interior space meanwhile spring/summer workshop will take full advantage of the openness of the central space

8. PC WORK STUDIO

a space to work, to meet and develop. a space for remote working and person business endeavours to flourish.

BEE'S MEADOW

FRUIT TREES

BIRD

MADRID RIO MANZANARES

PARCHIS SQUARE

CHES

IED

ART GALLERY

CARABANCHEL