

BANDA MUNICIPAL

- DE -

MADRID



52

1.

V. Cellos.

Capricho Español,

de

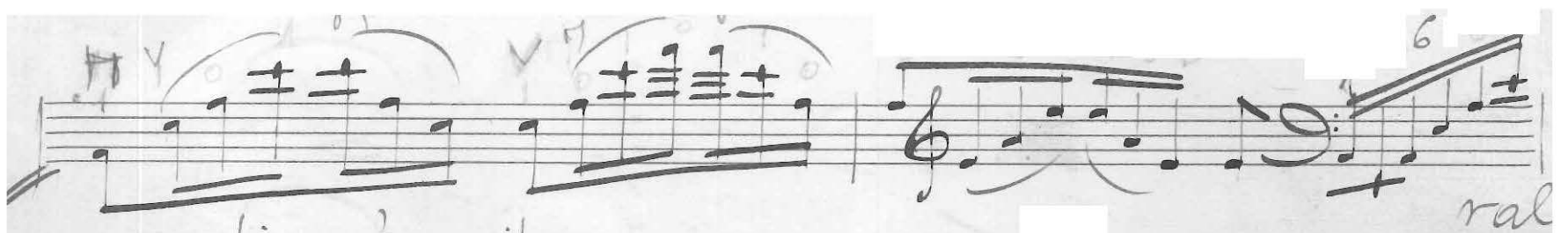
→ (L) A FIN

Rimsky - Korsakoff.

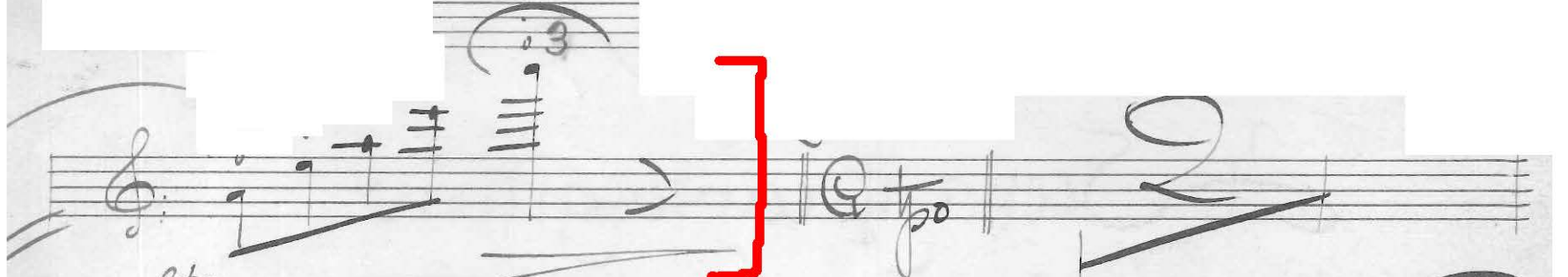


It. Sema y canto gitano.

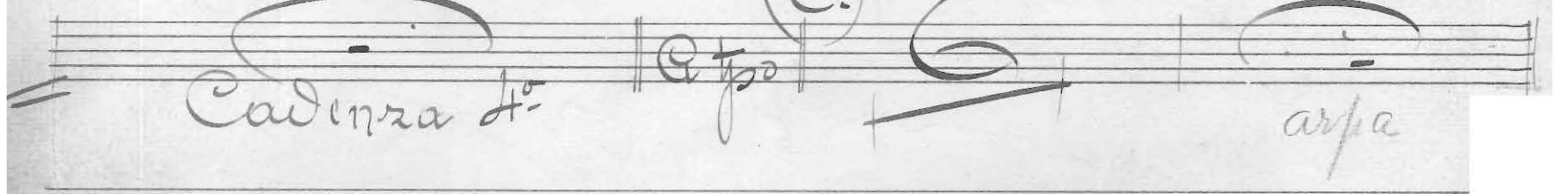
Allegretto D^{\flat} $\frac{6}{8}$ Quasi Cadenza 2^{da}



dim: o riten:



molto
Divivi
Cadenza 4^{ta}
Cadenza 3^{da}
arpa



BANDA MUNICIPAL

- DE -

MADRID

8

90

Handwritten musical score for Banda Municipal Madrid. The score consists of multiple staves, with some sections marked by red brackets. The music is written in a style typical of early 20th-century band music, featuring a variety of note values, rests, and dynamic markings. Key markings include:

- feroce**: Marked on the first staff and the staff following the second red bracket.
- divisi**: Marked on the third, fourth, fifth, and eighth staves.
- mf** (mezzo-forte): Marked on the third, fourth, fifth, and sixth staves.
- f** (forte): Marked on the sixth and seventh staves.
- arco**: Marked on the eighth staff.
- pizz** (pizzicato): Marked on the eighth and ninth staves.
- V.S. →**: Marked on the eighth staff, indicating a section change.

The score is written on a single page, with the title "BANDA MUNICIPAL - DE - MADRID" at the top. The page number "8" is in the top right corner, and "90" is written below it. The music is written in a style typical of early 20th-century band music, featuring a variety of note values, rests, and dynamic markings.

Handwritten musical score for strings. The first system includes the instruction *unis* and *Divisi.* with a *7* above the staff. The second system includes *Solo* and *arco* markings. The third system includes *arco* and *piu* markings. The fourth system includes *arco* and *piacer* markings.

Handwritten musical score for strings. The first system includes *arco* and *piu* markings. The second system includes *arco* and *piu* markings. The third system includes *arco* and *piu* markings. The fourth system includes *arco* and *piu* markings.

Handwritten musical score for strings. The first system includes the instruction *Quasi Guitarra non divisi* and a *7* above the staff. The second system includes *Simile* and *Los 4 Cellos* markings. The third system includes *Simile* and *Los 4 Cellos* markings. The fourth system includes *Simile* and *Los 4 Cellos* markings.