

Xylophone

# DANCE I

Dmitri Shostakovich

**Presto**

10 A 3

*mf*

*f*

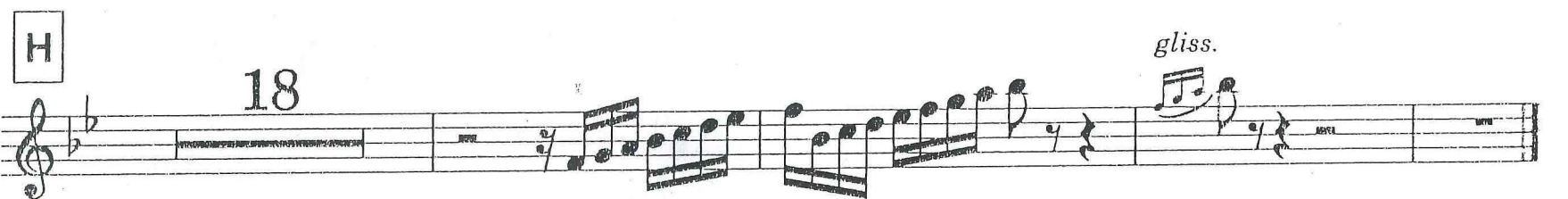
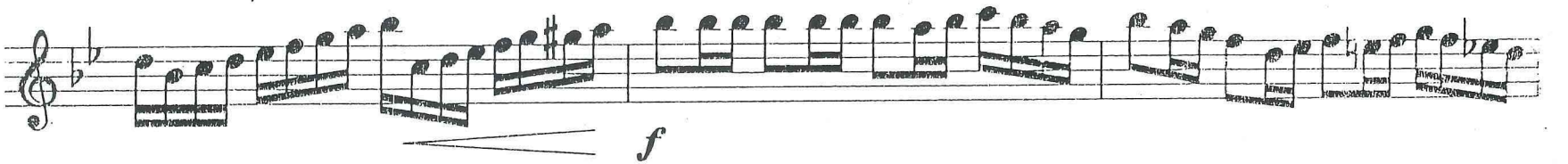
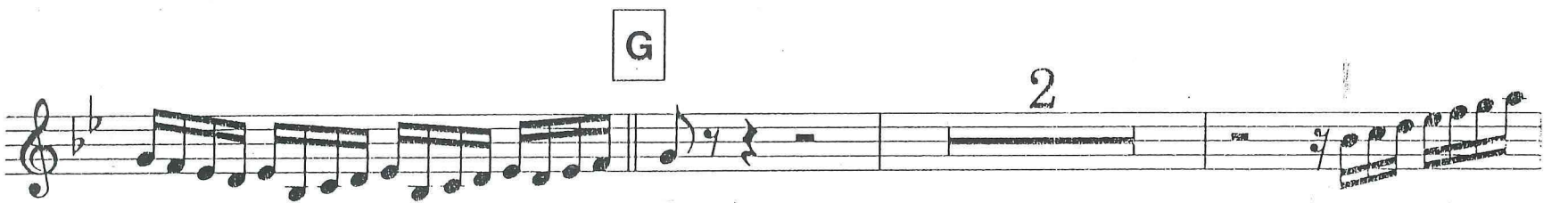
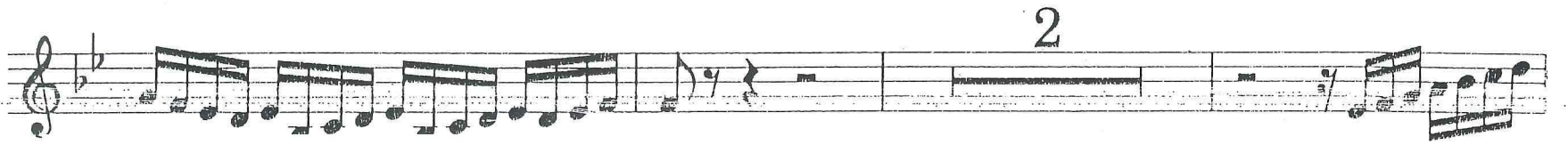
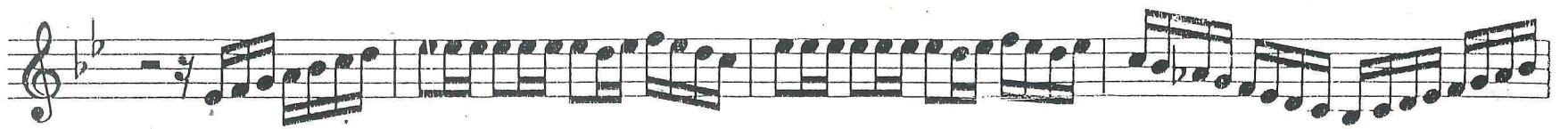
B 3

C 2

D 3 3

E 7 10 F 3

Xylophone



Xylophone

# Finale

Dmitri Shostakovich

Allegro moderato

1 3 *mf cresc.* *ff* *p > p* **A** *gliss.*

12 5 6 8 **B**

35 *f* **C**

43 *mp (solo)* **D**

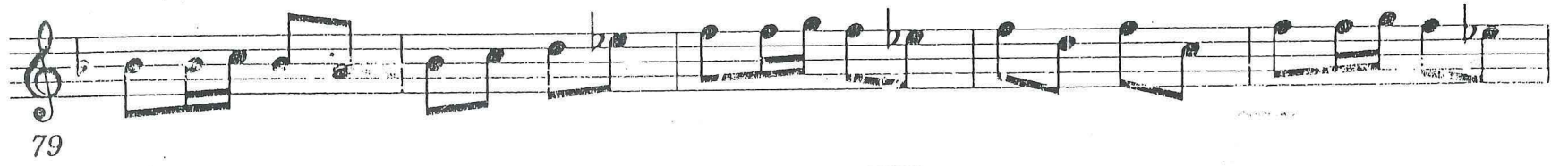
47 *f* *mp*

52 *cresc.*

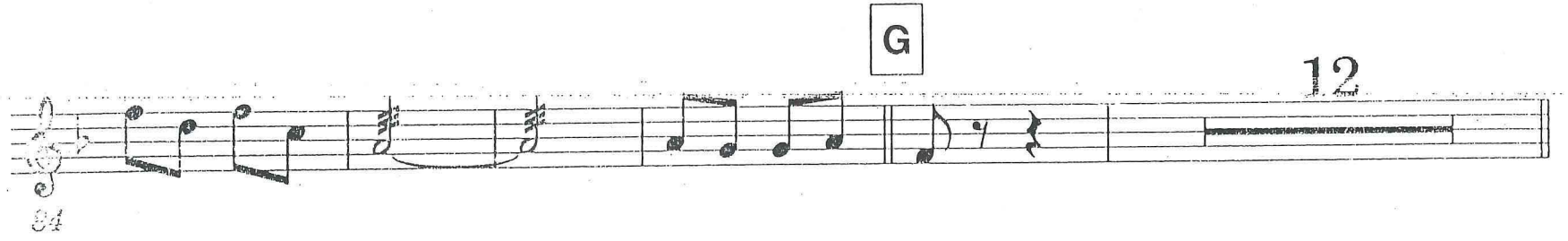
56 12 **E** *f* *f*

73 *gliss.* **F**

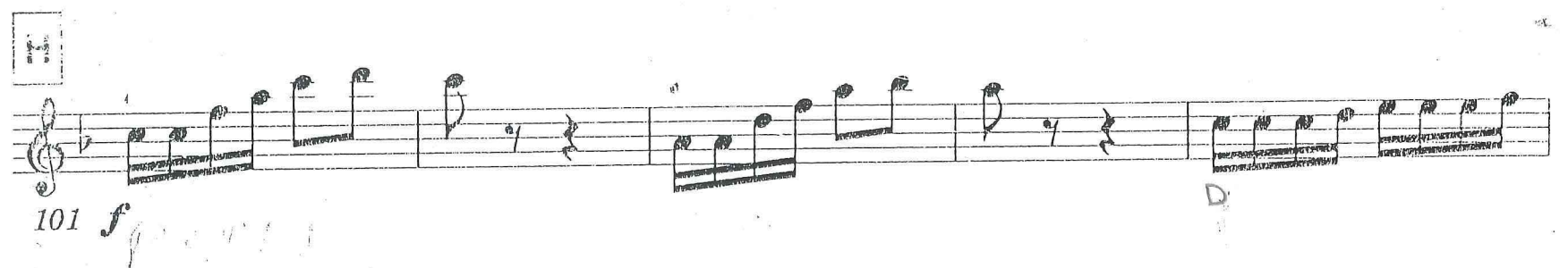
Xylophone



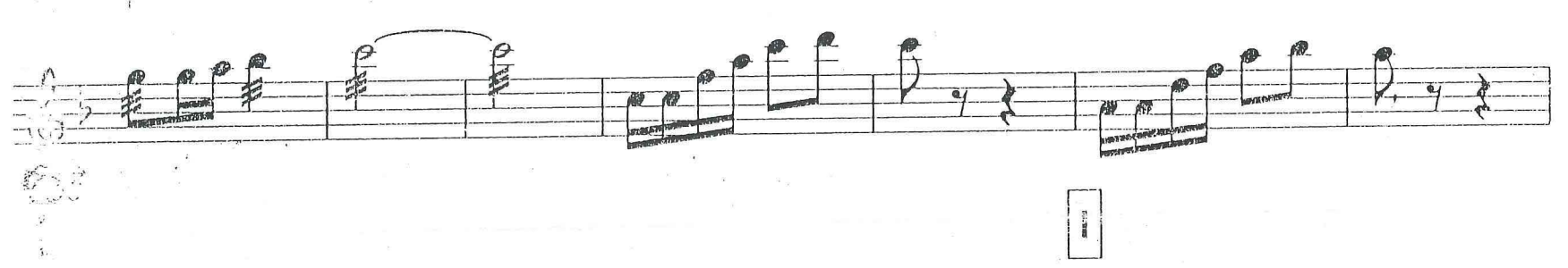
Musical staff 1, measures 79-83. Treble clef, key signature of one flat. The staff contains a sequence of eighth and sixteenth notes.



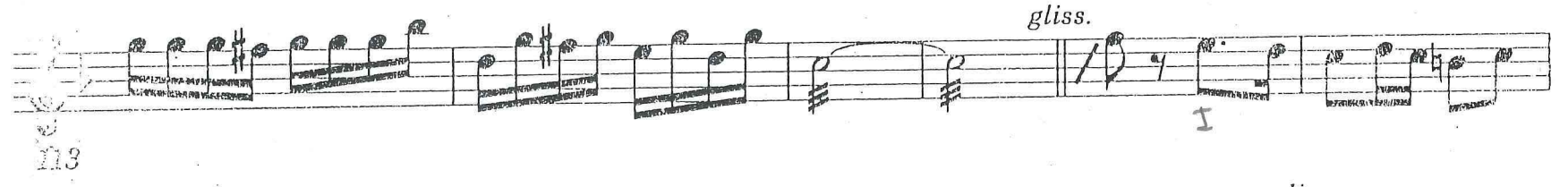
Musical staff 2, measures 84-93. Treble clef, key signature of one flat. A box containing the letter 'G' is positioned above the staff. The number '12' is written at the end of the staff. The staff contains a sequence of notes, including a whole note rest.



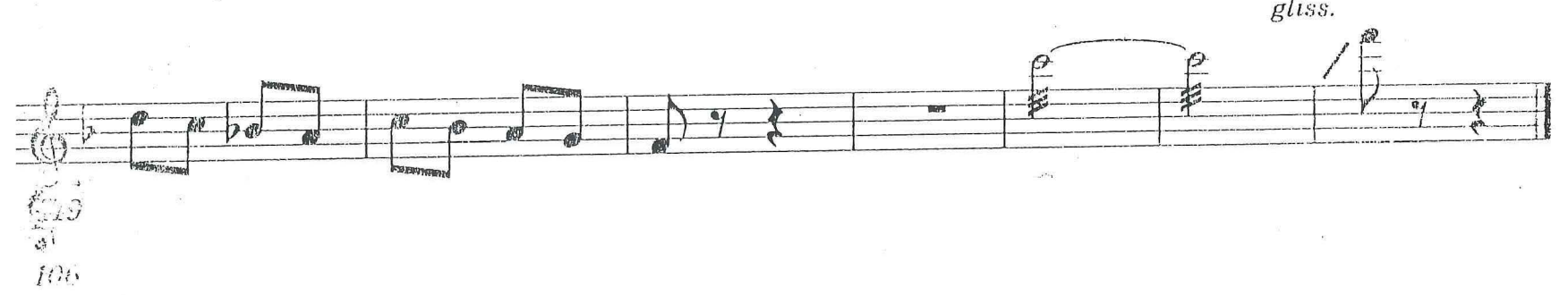
Musical staff 3, measures 101-105. Treble clef, key signature of one flat. A box containing the letter 'H' is positioned above the staff. The number '101' and the dynamic marking 'f' are written below the staff. The staff contains a sequence of notes, including a whole note rest.



Musical staff 4, measures 106-112. Treble clef, key signature of one flat. The staff contains a sequence of notes, including a whole note rest.



Musical staff 5, measures 113-118. Treble clef, key signature of one flat. A box containing the letter 'I' is positioned above the staff. The word 'gliss.' is written above the staff. The number '113' is written below the staff. The staff contains a sequence of notes, including a whole note rest.



Musical staff 6, measures 119-125. Treble clef, key signature of one flat. The word 'gliss.' is written above the staff. The number '119' is written below the staff. The staff contains a sequence of notes, including a whole note rest.